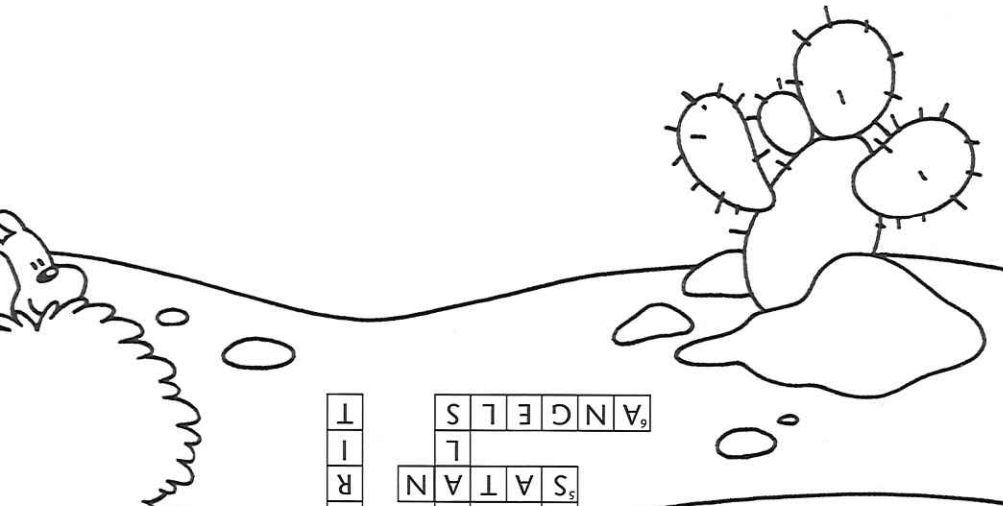
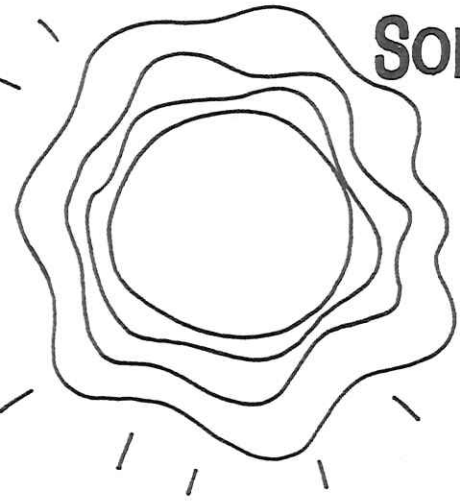
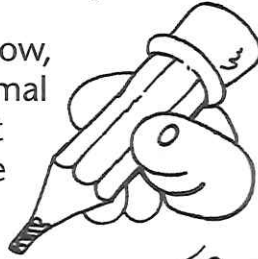


SOMETHING to DRAW

In the space below,
draw a wild animal
that Jesus might
have seen in the
desert.



T	A	N	G	E	L	S
I	L					
R	N	A	T	A	N	S
I	M					Y
P	I					A
S	W	I	L	D	E	R
S	N	E	R	N	E	S
A						

HIDDEN MESSAGE

THE KINGDOM OF
GOD IS AT HAND.

ANSWERS

CROSSWORD PUZZLE

1st Sunday in Lent



[Jesus] was in the wilderness forty days, being tempted by Satan.
Mark 1:13

NAME: _____



TODAY'S GOSPEL

Mark 1:9-15

CROSSWORD PUZZLE

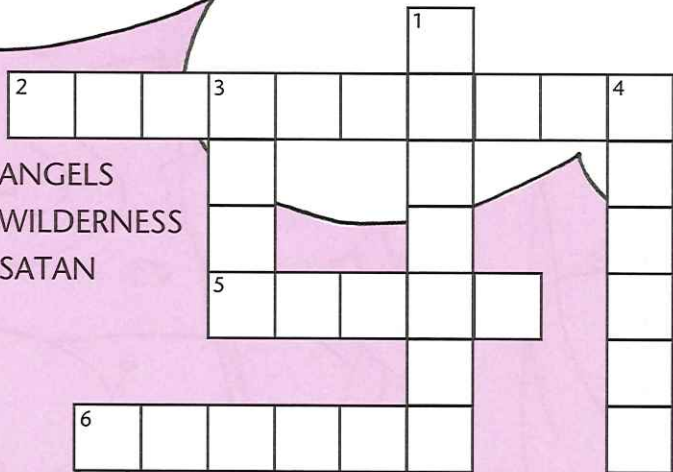
Try to put words from today's Gospel into the crossword puzzle. (If you need help, use the word list.)

The (4 down) sent Jesus into the (2 across). He was there forty (3 down). (5 across) tempted Him. He was with wild (1 down). (6 across) were with Him too.

WORD LIST

- DAYS
- ANIMALS
- SPIRIT

- ANGELS
- WILDERNESS
- SATAN



HIDDEN MESSAGE

Jesus told good news. Circle every third letter in the puzzle, and write the letters on the lines below. Then, divide them into words to learn some of the good news.

M	A	T	H	C	H	I	N
E	R	I	K	S	L	I	P
S	N	A	G	G	R	A	D
M	O	O	N	S	M	U	G
O	N	O	F	F	E	G	G
R	O	O	T	D	E	L	I
R	O	S	E	E	A	R	S
T	E	C	H	D	E	A	R
S	N	O	O	D			

